

HMS Medium Voltage Air-Insulated Metal-Enclosed Switchgear

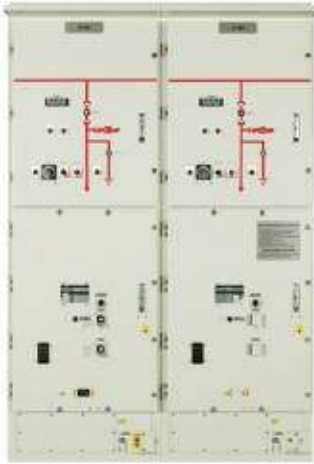
Internal Arc-Proof



Switchgear

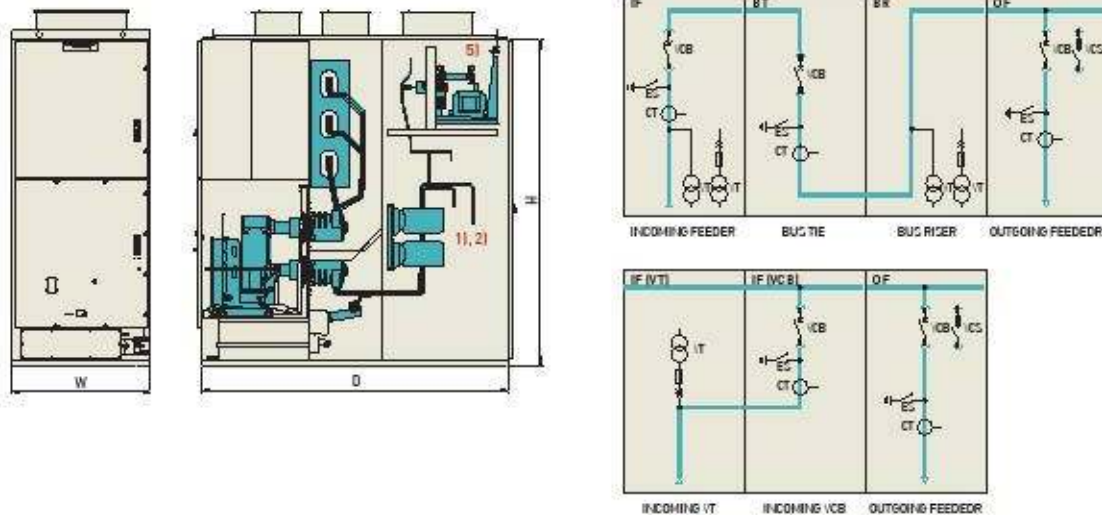
7.2/12 kV Switchgear

HMS-N12



		Rated voltage (kV)		
		7.2/12		
Normal current (A)	Main-bus	≤4,000		
	Feeder	1,250/2,000/2,500/3,150/4,000		
Frequency		50/60		
Power frequency withstand voltage (kV)		28		
Lightning impulse withstand voltage (kV)		75		
Short circuit breaking current (kA)		..40	..50	
Short time withstand current, 3 s (kA)		..40	..50	
Peak withstand current (kA, peak)		..104	..130	
Partition class		PM	PM	
Loss of service continuity category		LSC2B	LSC2B	
Arc classification, AFLR		..40 kA	..50 kA	
Normal feeder current for contactor panel (A) ³⁾		..400		
Size (mm) ⁴⁾	Width (W)	1,250 A	750 (800) ⁶⁾	800
		2,000 A	800	800
		≥2,500 A	1,000	1,000
		Contactor panel	750	750
	Depth (D)	2,200		
	Height(H)	2,350		

Section View (IF/OF) and Single Line Diagram of Typical Unit



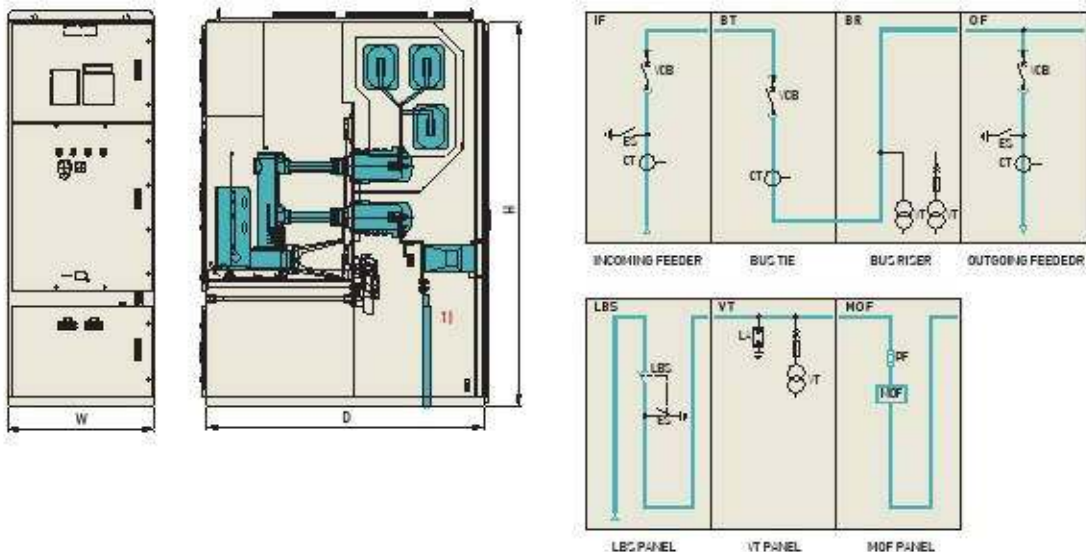
- ※ 1) Connection compartment can be accessed from the rear.
- 2) 1 ZCT and 2 CT's per phase can be installed in cable connection compartment with the panel of standard size.
- 3) Current values and short circuit breaking current of contactor panel dependent on HV HRC fuses.
- 4) The size of actual panel can be different according to the rating, quantity, and arrangement of components.
- 5) Width of 40 kA 1,250 A panel is 800 mm when withdrawal voltage transformer is installed in the rear upper side.
- 6) Withdrawable voltage transformer can be installed in the rear upper side of the panel on request.

HMS-N24




Rated voltage (kV)		24	
Normal current (A)	Main-bus	≤3,150	
	Feeder	1,250/2,000/2,500/3,150	
Frequency		50/60	
Power frequency withstand voltage (kV)		50	
Lightning impulse withstand voltage (kV)		125	
Short circuit breaking current (kA)		..25	
Short time withstand current, 3 s (kA)		..25	
Peak withstand current (kA, peak)		..65	
Partition class		PM	
Loss of service continuity category		LSC2B	
Arc classification, AFLR		..25 kA	
Size (mm) ²⁾	Width (W)	1,250 A	800
		≥2,000 A Width	1,000
		LBS, VT, MOF panel	1,200
	Depth (D)	Standard panel	1,700
		Extend panel ³⁾	2,200
Height (H)		2,350	

Section View (IF/OF) and Single Line Diagram of Typical Unit

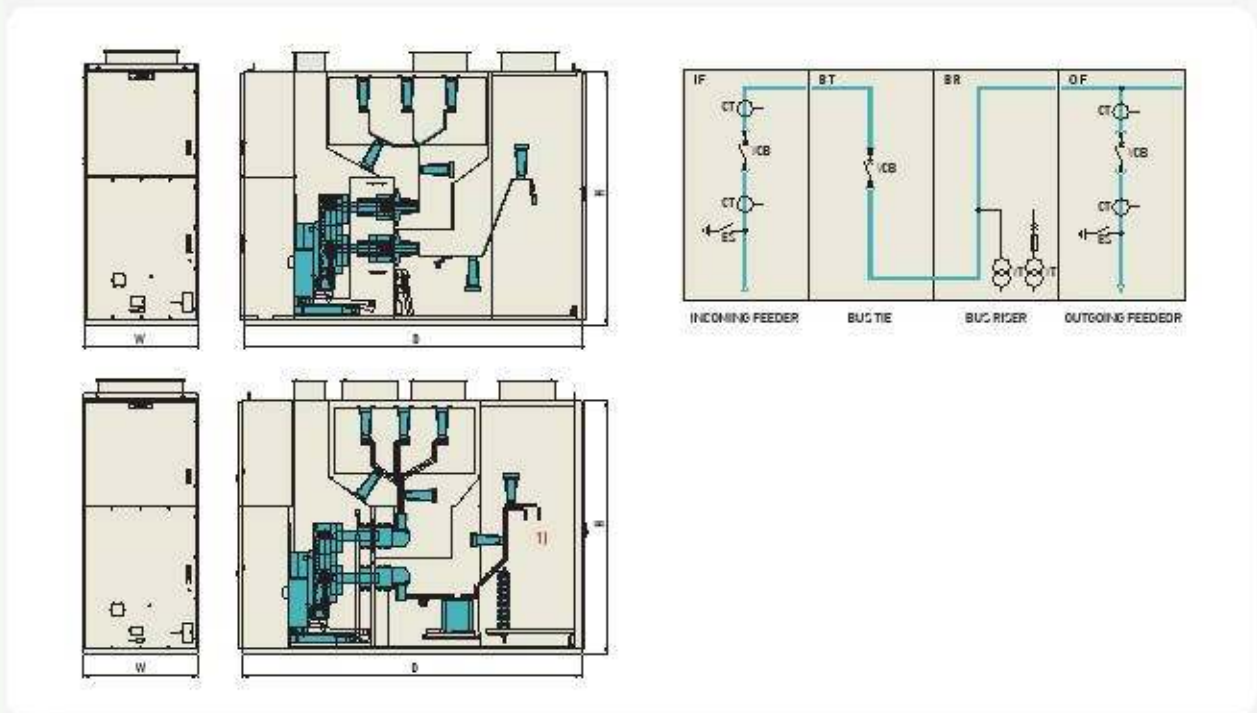


- ※ 1) Connection compartment can be accessed from the rear, but front side accessible panel available on request.
- 2) The size of actual panel can be different according to the rating, type, quantity, and arrangement of components.
- 3) Extend panel can be used when installing a ZCT in the switchgear or more equipment than our standard is required.

HMS-N36

	Rated voltage (kV)		36
	Normal current (A)	Main-bus	≤3,150
		Feeder	1,250/2,000/2,500/3,150
	Frequency		50/60
	Power frequency withstand voltage (kV)		70
	Lightning impulse withstand voltage (kV)		170
	Short circuit breaking current (kA)		..31.5
	Short time withstand current, 3 s (kA)		..31.5
	Peak withstand current (kA, peak)		..82
	Partition class		PM
Loss of service continuity category		LSC2B	
Arc classification, AFLR		..31.5 kA	
Size (mm) ²⁾	Width (W)	1,200	
	Depth (D)	3,550	
	Height (H)	2,650	

Section View (IF/OF) and Single Line Diagram of Typical Unit



- ※ 1) Connection compartment can be accessed from the rear.
- 2) The size of actual panel can be different according to the rating, quantity, and arrangement of components.